



**PIVOT
POINT**

EDUCATIONAL
HAIR PORTFOLIO



TABLE OF Contents

Our Story1

Ethical Standards2

Manufacturing Process3

The Ultimate Guide4

Specifications5

Original Series6

Premium Series6

Cap Series.....7

Slip-On Series7

Product Listings8

All-Purpose.....9

Color11

Economy14

Industry Collab16

Long Hair17

Male20

Showcase & Competition22

Styling27

Texture30

Cap Series Components34

Cap Series Accessories.....36

Swatches and Wefts.....37

Holders & Tripods39

Care & Maintenance.....40

Ordering40



JOY STARTS HERE

In every strand, there's a story waiting to be told.
We see more than just hair. We see potential—a canvas for creation.
A space where design meets purpose.

For over sixty years, we've pursued perfection in Educational Hair. With every product we craft, we're not just giving you tools—we're giving you a promise: a promise of authenticity, unparalleled quality and social accountability.

Our Original Series encapsulates the legacy of a passion passed down through generations. It is for the artists who find inspiration in the familiar. With timeless quality and elegance, we offer tools that become companions on the journey of creative exploration.

Yet, we believe in challenging the norms. The Cap Series is our vision of the future. It's crafted for the pioneers who challenge the norm and champion inclusivity and sustainability. Here we present a world where creativity knows no bounds, where sustainability isn't just a word but a pledge. It's a testament to our commitment to evolve and blend our rich heritage with forward-thinking innovations.

This is more than Educational Hair. This is where innovation meets emotion.

This is where joy starts. But where it goes...?

THAT'S UP TO YOU.



OUR COMMITMENT TO ETHICAL STANDARDS

Our commitment to beauty goes beyond aesthetics; it's a shared celebration of responsibility, craftsmanship and the joy that radiates from every strand.

Social Accountability

As a multi-generational, family-owned company, we took proactive steps to attain our factory's esteemed SA8000® certification.* The SA8000 standard, crafted by Social Accountability International (SAI), is more than just a checklist audit: it's our guiding light, ensuring alignment with the highest management standards and continual improvement in social performance.

The elements of the SA8000 standard protect our artisans against child labor, forced labor and discrimination while providing them with a healthy and safe working environment, freedom of association and more.

Responsible Sourcing

At the core of our craft lies the essence of hair, and through close collaboration with our trusted suppliers, we've solidified commitments to responsibly source the hair used in our manufacturing process. Each supplier willingly enters a written pact, ensuring transparency about the hair's origin, documentation and the respectful treatment of donors.

Protecting the Environment

We champion sustainable practices in manufacturing our hair. The water utilized during raw hair preparation undergoes a purification process, minimizing the impact of chemicals to restore the purest water to the environment.

*SA8000 certification solidifies a commitment to human rights by guarding against the use of child and forced labor, discrimination and unfair disciplinary practices, working hours and compensation. Details regarding SAI and SA8000 can be reviewed at <https://sa-intl.org>



HANDMADE FOR YOU WITH LOVE

Each of our mannequins is a labor of love. Meticulously hand-implanted to mirror natural growth patterns and densities, over 8 hours is dedicated to its creation.

Our careful manufacturing process ensures consistency, offering aspiring and seasoned professionals worldwide a reliable and realistic training experience.

SCAN OR CLICK
TO LEARN MORE





THE ULTIMATE GUIDE

Every mannequin is handcrafted with its own set of unique specifications. Each is designed with a purpose: a blank canvas for you to learn, grow and master your craft, no matter the trend or technique.

Head Size

Each head size holds a different purpose. The larger the head, the more hair and surface area to practice on. Our medium head size gives the most authentic experience by mimicking the size of the average human head. The smaller head size supercharges workshops and training sessions by using just the right amount of hair.

Hair Type

Most of our mannequins feature 100% human hair for the most realistic results, while certain products feature a blend of natural hair for added versatility.

Hair Color

Our mannequins undergo a lightening process that excludes chemical treatments, ensuring a range of colors without compromising gentleness. Hair color listed in the product description is based on tone level. Actual color levels may differ based on color brand.

Hair Texture

Hair undergoes a steaming process without harsh chemicals, to achieve varying hair textures. The “mm” listed under each product refers to the rod diameter used during steaming.

Hair Length

We measure mannequin hair using a 90° projection angle from the head. You'll find two numbers—one indicating the measurement from the front of the head and the second from the nape.

FORMS

We speak hair design by heart. One distinctive aspect of our approach is how we teach haircutting, using the four basic forms. They are the foundation of any haircut. After these are mastered, the possibilities are endless.



Solid

These Solid Hair mannequins empower you to embrace risks, even with a classic look. Ideal for bobs, graduated cuts, long hair styles and mastering basic to advanced perming and coloring techniques.



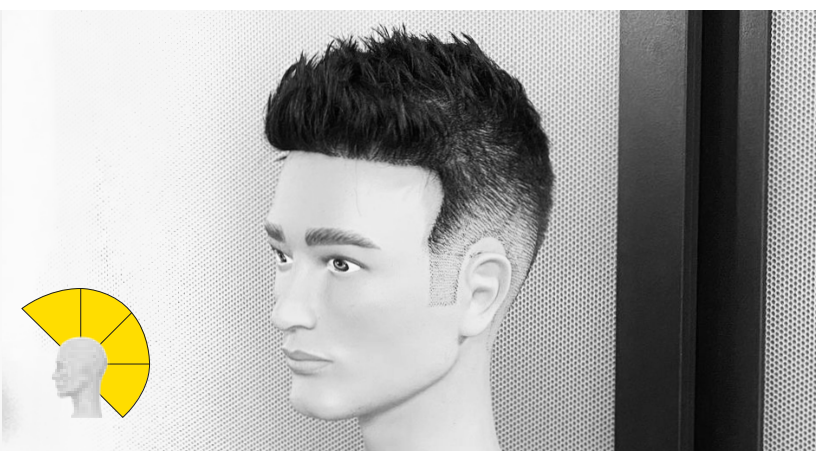
Increase-Layered

Elevate your skills with our Increase-Layered mannequins, perfect for crafting long, layered sculptures. Experiment with texture, color and services, and unleash creativity with balayage or your spin on ombré effects.



Uniformly Layered

Experiment with looks from pixie to chin-length with our Uniformly Layered mannequins. They offer a shorter base cut with consistent, equally layered lengths, allowing you to practice dry-cutting, wet-hair design and color techniques.



Graduated

These Graduated mannequins help enhance your clipper-cutting and fade techniques. Shorter exterior lengths progress seamlessly to longer interior lengths, making it ideal for tapered cuts and fades.



ORIGINAL Series

Elevate your skills with our Original Series. Perfect for workshops, advanced training or at-home/in-school practice, these mannequins are the ultimate tool to help unlock your full potential.

OS in product listings refers to Original Series.

CAP Series

Discover a world of limitless creativity with the Cap Series. Unlike traditional mannequins, our innovative design introduces one reusable headform crafted from recyclable ABS plastic. Perfect for all experience levels, interchangeable hair caps effortlessly pop on and off, making the Cap Series a lifelong tool for endless learning.

SCAN OR CLICK
TO LEARN MORE



CS in product listings refers to Cap Series.

6 PIVOT POINT | EDUCATIONAL HAIR PORTFOLIO





PREMIUM Series

Step into excellence with our Premium Series—the perfect canvas to showcase your extraordinary talent. OMC and WorldSkills certified, these mannequins will help you shine in competitions.

*PS in product listings refers to Premium Series.
Michelle mannequin is not OMC or WorldSkills certified.*

SLIP-ON Series

Our cost-effective Slip-On Series is perfect for students mastering techniques or workshop trainings. The interchangeable masks slip onto one universal headform, saving space and reducing waste.

SS in product listings refers to Slip-On Series.





LET'S FIND WHAT YOU NEED

Use our key to explore the hair texture, color and head size of each product. Every listing also includes a structure graphic, offering a visual guide to both form and hair lengths.

KEY																		
TEXTURE						COLOR										HEAD SIZE		
Straight	Wavy 15 mm	Very Wavy 10 mm	Curly 7 mm	Very Curly 5 mm	Coily 3 mm	Black	Dark	Medium Dark	Medium	Medium Light	Light	Ultra Light	White	Gray		Large	Medium	Small

Now that you know our secrets, let's explore our portfolio:

- All-Purpose
- Color
- Economy
- Long Hair
- Male
- Showcase & Competition
- Styling
- Texture

*Not all mannequins are sold in every country.
Items available in Cap Series (CS) are sold as hair caps only; Reusable Headform sold separately.
Items available in Slip-On Series (SS) are sold as masks only; Universal Headform sold separately.
Hair color may vary in Original Series versus Cap Series images due to photography and lighting.*

ALL-PURPOSE



A must-have for students, workshops and trainings, these mannequins grant the freedom to explore cutting, styling, perming and coloring techniques without boundaries.

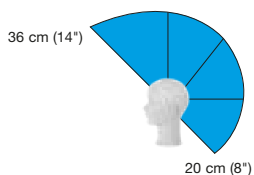
OS ORIGINAL SERIES



BRIDGETTE MARIE

AVAILABLE IN:

- OS MMSCLML
- CS SC2-FMMSCLML



Hair Length: 36 cm + 20 cm
(14" + 8")
Hair Type: Human

CS CAP SERIES



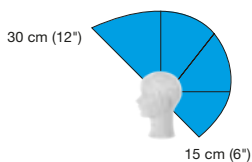
OS ORIGINAL SERIES



DIANE

AVAILABLE IN:

- OS MMSSCLLL
- CS SC3-FMSSCLLL



Hair Length: 30 cm + 15 cm
(12" + 6")
Hair Type: Human

CS CAP SERIES



KEY

TEXTURE



COLOR



HEAD SIZE



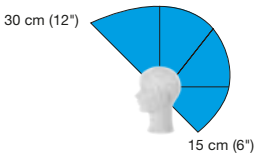


OS ORIGINAL SERIES

CS CAP SERIES



ERIKA
AVAILABLE IN:
OS MMSSCDLL
CS SC3-FMSSCDLL



Hair Length: 30 cm + 15 cm
(12" + 6")
Hair Type: Human

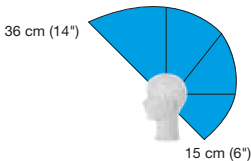


OS ORIGINAL SERIES

CS CAP SERIES



VIOLA
AVAILABLE IN:
OS MMMSCDML
CS SC2-FMMSCDML



Hair Length: 36 cm + 15 cm
(14" + 6")
Hair Type: Human



KEY

TEXTURE



Straight
Wavy
15 mm
Very Wavy
7 mm
Curly
10 mm
Very Curly
5 mm
Coily
3 mm

COLOR



Black
Dark
Medium Dark
Medium
Medium Light
Light
Ultra Light
White
Gray

HEAD SIZE



Large
Medium
Small

COLOR

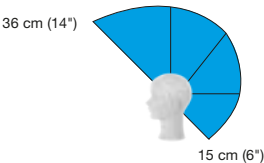


Whether you're training, or going bold with vibrant colors, our products start with the highest quality of raw hair to ensure you have the most realistic color results.

OS ORIGINAL SERIES



ALYSE
AVAILABLE IN:
OS MMSSCZLL
CS SC3-FMSSCZLL



Hair Length: 36 cm + 15 cm
(14\" + 6\")
Hair Type: Human

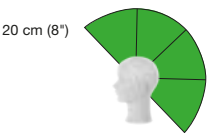
CS CAP SERIES



OS ORIGINAL SERIES



BICOLOR
AVAILABLE IN:
OS MMSUIZLL-2P
CS S3-FMSUIZLL-2P



Hair Length: 20 cm (8\")
Hair Type: Human

CS CAP SERIES

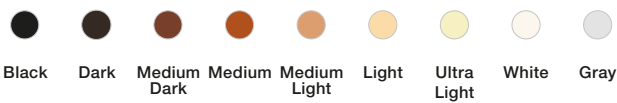


KEY

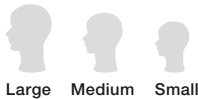
TEXTURE



COLOR



HEAD SIZE





os ORIGINAL SERIES

cs CAP SERIES

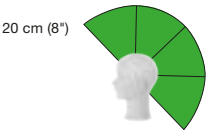


COLOR
QUADRANT

AVAILABLE IN:

os MMSUZZLL-4P

cs SC3-FMSUZZLL-4P



Hair Length: 20 cm (8")
Hair Type: Human



os ORIGINAL SERIES

cs CAP SERIES

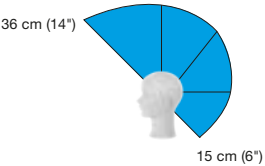


GWYN

AVAILABLE IN:

os MMSSI9LL

cs SC3-FMSSI9LL



Hair Length: 36 cm + 15 cm
(14" + 6")
Hair Type: Human



KEY

TEXTURE



Straight
Wavy
15 mm
Very Wavy
7 mm
Curly
10 mm
Very Curly
5 mm
Coily
3 mm

COLOR



Black
Dark
Medium Dark
Medium
Medium Light
Light
Ultra Light
White
Gray

HEAD SIZE



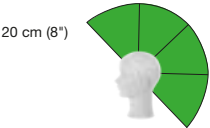
Large
Medium
Small



OS ORIGINAL SERIES



LANA
AVAILABLE IN:
OS MMSUILLL
CS SC3-FMSUILLL



Hair Length: 20 cm (8")
Hair Type: Human

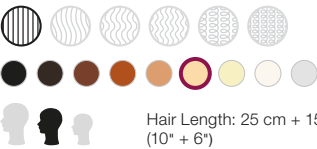
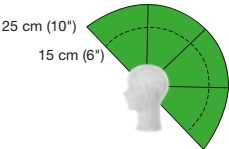
CS CAP SERIES



OS ORIGINAL SERIES



KIM B
AVAILABLE IN:
OS MMMUILLL



Hair Length: 25 cm + 15 cm
(10" + 6")
Hair Type: Human

“
The mannequins are *perfect* to see the effects of *texture* and porosity when applying color. If you are an instructor or even a student, you will find these mannequins *useful*.
”

– Demonica Allen

KEY

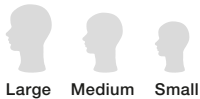
TEXTURE



COLOR



HEAD SIZE



ECONOMY



The ultimate launchpad for students embarking on their beauty careers, offering the platform to hone cutting and styling techniques perfectly.

OS ORIGINAL SERIES

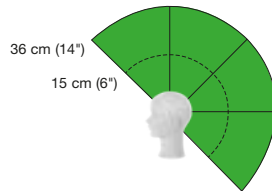


KATE

AVAILABLE IN:

OS MMSUZZLL-HN

CS SC3-FMSUZZLL-HN



Hair Length: 36 cm + 15 cm
(14" + 6")
Hair Type: Human/Natural Mix

CS CAP SERIES



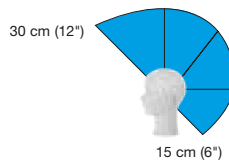
SS SLIP-ON SERIES



FEMALE SLIP-ON

AVAILABLE IN:

SS SB9SIDLL



Hair Length: 30 cm + 15 cm
(12" + 6")
Hair Type: Human

“

Simply the *best quality*. Pivot Point makes the ONLY mannequin I'll work on.

– Joakim Roos

KEY

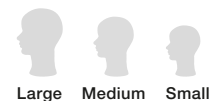
TEXTURE



COLOR



HEAD SIZE

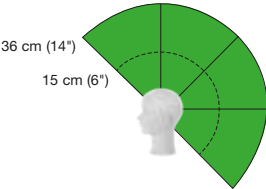




os ORIGINAL SERIES



ROBIN
AVAILABLE IN:
os MMSUYDLD
cs SC3-FMSUYDLD



Hair Length: 36 cm + 15 cm
(14" + 6")
Hair Type: Natural

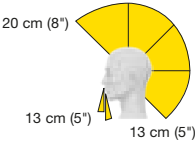
cs CAP SERIES



ss SLIP-ON SERIES



MALE BEARDED SLIP-ON
AVAILABLE IN:
ss SG9GIDLL-BR



Hair Length: 20 cm + 13 cm
(8" + 5") + 13 cm (5") Beard
Hair Type: Human

“Pivot Point has been my go-to for every class. They’re *reliable* and, most importantly, *provide quality products* that are made with *ethical* manufacturing standards.”

– Anh Co Tran

KEY

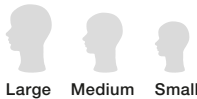
TEXTURE



COLOR



HEAD SIZE





Crafted in collaboration with our industry partners, these specialized items are versatile powerhouses.

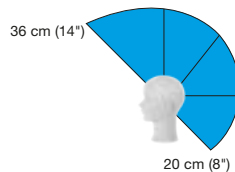
os ORIGINAL SERIES



LYDIA

AVAILABLE IN:

os MHSSIZLL-SV



Hair Length: 36 cm + 20 cm
(14\" + 8\")
Hair Type: Human



“

Meet ‘*Lydia*’ – a mannequin that my ArTeam and I custom designed for cutting, finishing and color work. I’m proud to partner with Pivot Point, a brand that has *shaped education* in our industry. Pivot Point is the first mannequin manufacturer to achieve SA8000® Certification. The SA8000® designation signifies the highest standards and best practices for workplace safety and fair wages. It gives you full confidence that you are investing in an ethically sound product. Each mannequin is *hand-made by highly skilled artisans* who take great pride in their workmanship.

– Sam Villa

LONG HAIR



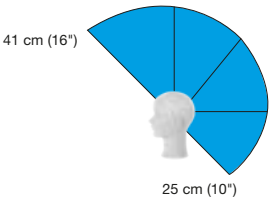
Unlock your creativity with our long hair mannequins, meticulously crafted to showcase the craft of long hair styling, bridal techniques and formal updos.

os ORIGINAL SERIES

cs CAP SERIES



JOSEPHINE
AVAILABLE IN:
os MMMSC3ML
cs SC2-FMMSC3ML



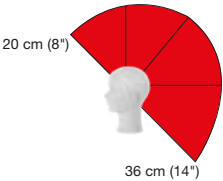
Hair Length: 41 cm + 25 cm
(16" + 10")
Hair Type: Human



ss SLIP-ON SERIES



LONG HAIR SLIP-ON
AVAILABLE IN:
ss SB9II3LL-LH



Hair Length: 20 cm + 36 cm
(8" + 14")
Hair Type: Human

“Major shout-out to Pivot Point for crafting the *best mannequins* to work with. I’ve always loved them because of the *quality, support* and *educational aspect*.”

– Manda Ziegelman

KEY

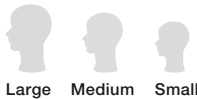
TEXTURE



COLOR



HEAD SIZE

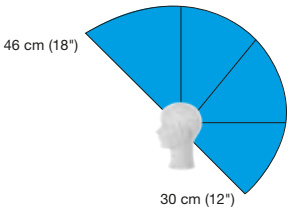




os ORIGINAL SERIES

cs CAP SERIES

MADI
AVAILABLE IN:
os MMSSC7LL-XL
cs SC3-FMSSC7LL-XL



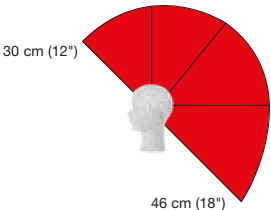
Hair Length: 46 cm + 30 cm
(18" + 12")
Hair Type: Human



os ORIGINAL SERIES

cs CAP SERIES

NADINE
AVAILABLE IN:
os MMMIC3ML-XLLW
cs SC2-FMMIC3ML-XLLW



Hair Length: 30 cm + 46 cm
(12" + 18")
Hair Type: Human



KEY

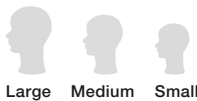
TEXTURE



COLOR



HEAD SIZE

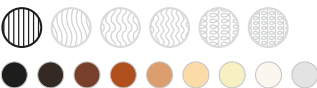
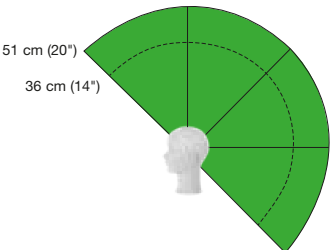




os ORIGINAL SERIES



PEGGY B
AVAILABLE IN:
os MRLUCDML-M



Hair Length: 51 cm + 36 cm
(20" + 14")
Hair Type: BioBlend

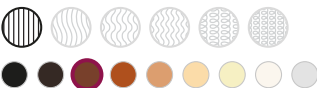
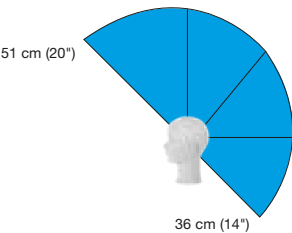
“
The mannequins
are the *Rolls-Royce*
of educational tools.

– Mark Pinkerton

os ORIGINAL SERIES



VANESSA
AVAILABLE IN:
os MMMSCDML-XL
cs SC2-FMMSCDML-XL



Hair Length: 51 cm + 36 cm
(20" + 14")
Hair Type: Human

cs CAP SERIES



KEY

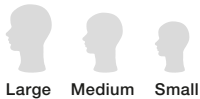
TEXTURE



COLOR



HEAD SIZE



MALE



Tailored to embrace the cutting edge of trends in short hairstyling and barbering techniques, our male mannequins are your go-to partners for mastering modern looks.

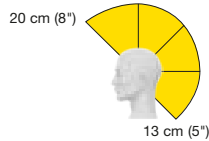
OS ORIGINAL SERIES



COLE

AVAILABLE IN:

OS MPMGIDML-8



Hair Length: 20 cm + 13 cm
(8" + 5")
Hair Type: Human

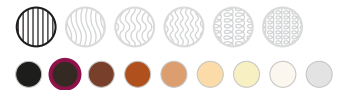
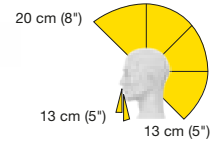
OS ORIGINAL SERIES



IAN

AVAILABLE IN:

OS MPMGIDML-8BR5C



Hair Length: 20 cm + 13 cm
(8" + 5") + 13 cm (5") Beard
Hair Type: Human

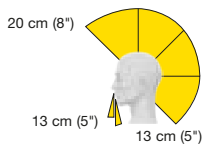
CS CAP SERIES



LIAM

CAP SERIES COMPATIBLE SLIP-ON
AVAILABLE IN:

CS SC3-MPMGIDML-8BR5C



Hair Length: 20 cm + 13 cm
(8" + 5") + 13 cm (5") Beard
Hair Type: Human

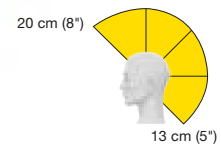
OS ORIGINAL SERIES



PATRICK

AVAILABLE IN:

OS MPMGIDML_8



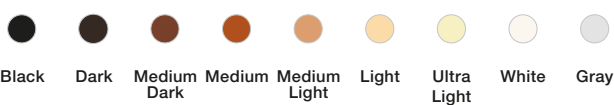
Hair Length: 20 cm + 13 cm
(8" + 5")
Hair Type: Human

KEY

TEXTURE



COLOR



HEAD SIZE

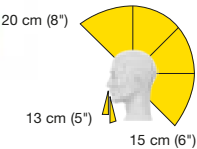




os ORIGINAL SERIES



**SAMUEL
BEARDED**
AVAILABLE IN:
os MLMGIDML-BR

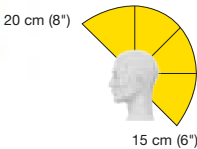


Hair Length: 20 cm + 15 cm
(8" + 6") + 13 cm (5") Beard
Hair Type: Human

os ORIGINAL SERIES



SAMUEL
AVAILABLE IN:
os MLMGIDML



Hair Length: 20 cm + 15 cm
(8" + 6")
Hair Type: Human



SHOWCASE & COMPETITION

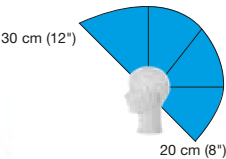


Elevate your artistry with our showcase mannequins designed to display bridal elegance, long hair styling, breathtaking color techniques and shine in the spotlight of competitions.

PS PREMIUM SERIES



ALICIA
AVAILABLE IN:
PS MSMZZZZT

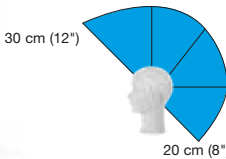


Hair Length: 30 cm + 20 cm
(12" + 8")
Hair Type: Human/Natural

PS PREMIUM SERIES



ANNA
AVAILABLE IN:
PS MSMZDZZT-BLUE

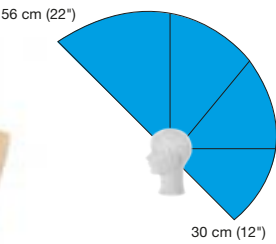


Hair Length: 30 cm + 20 cm
(12" + 8")
Hair Type: Human

PS PREMIUM SERIES



DIANA
AVAILABLE IN:
PS MSMSCLCL-XLLW

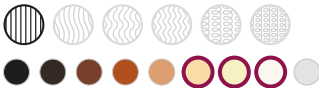
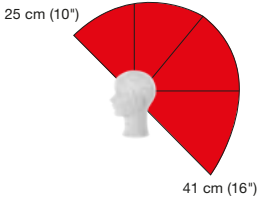


Hair Length: 56 cm + 30 cm
(22" + 12")
Hair Type: Human

PS PREMIUM SERIES



INGRID
AVAILABLE IN:
PS MSMIZZCT-LW



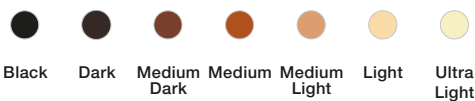
Hair Length: 25 cm + 41 cm
(10" + 16")
Hair Type: Human/Natural

KEY

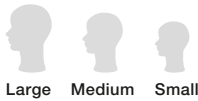
TEXTURE



COLOR



HEAD SIZE

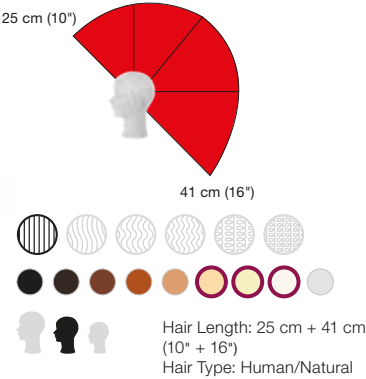




PS PREMIUM SERIES



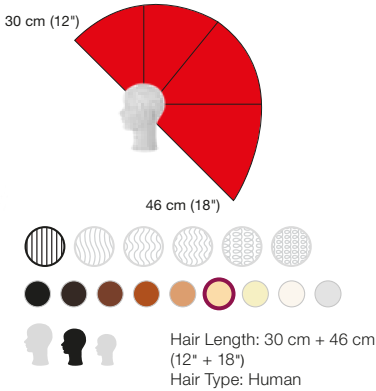
INGRID LEE
AVAILABLE IN:
PS INGRID16-LEE



PS PREMIUM SERIES



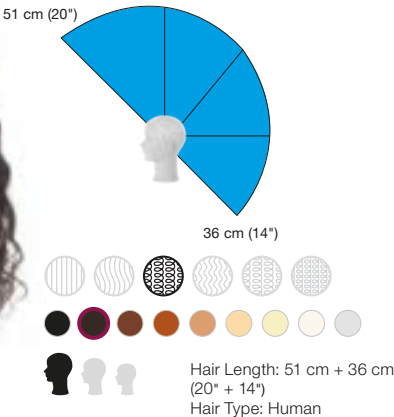
LOUISE
AVAILABLE IN:
PS MSMZZCT-LW



PS PREMIUM SERIES



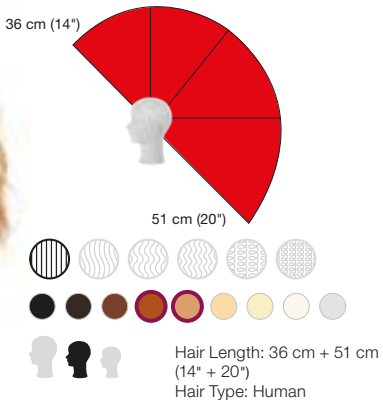
MICHELLE
AVAILABLE IN:
PS MBLSIDMD-10C



PS PREMIUM SERIES



NATALIA
AVAILABLE IN:
PS MSMZDZCT-LW



KEY

TEXTURE



Straight



Wavy



Very Wavy



Curly



Very Curly



Coily



Coily

COLOR



Black



Dark



Medium Dark



Medium



Medium Light



Light



Ultra Light



White



Gray

HEAD SIZE



Large



Medium



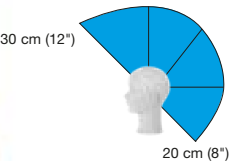
Small



PS PREMIUM SERIES



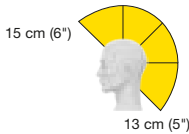
SOPHIA
AVAILABLE IN:
PS MSMSGWCT



PS PREMIUM SERIES



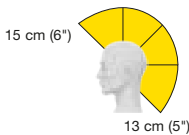
ANTONIO
AVAILABLE IN:
PS MFLGDDCL



PS PREMIUM SERIES



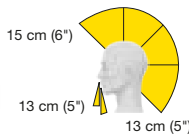
ANTONIO BALD
AVAILABLE IN:
PS MFLGDDCL-BD



PS PREMIUM SERIES



GIOVANNI
AVAILABLE IN:
PS MFLGDDCL-BR

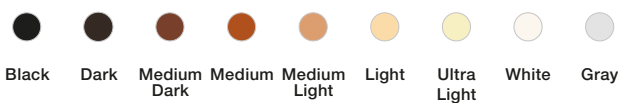


KEY

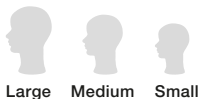
TEXTURE



COLOR



HEAD SIZE

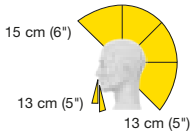




PS PREMIUM SERIES



GIOVANNI BALD
AVAILABLE IN:
PS MFLGDDCL-BRBD

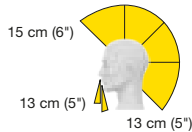


Hair Length: 15 cm + 13 cm
(6" + 5") + 13 cm (5") Beard
Hair Type: Human

PS PREMIUM SERIES



JOHANN
AVAILABLE IN:
PS MFLGGWCL-BR

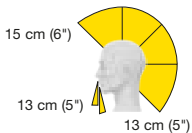


Hair Length: 15 cm + 13 cm
(6" + 5") + 13 cm (5") Beard
Hair Type: Natural

PS PREMIUM SERIES



JULIANO
AVAILABLE IN:
PS MFLGDBCL-BR

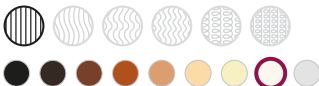
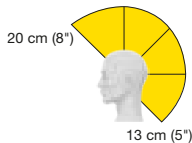


Hair Length: 15 cm + 13 cm
(6" + 5") + 13 cm (5") Beard
Hair Type: Human

PS PREMIUM SERIES



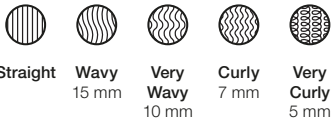
LUCAS
AVAILABLE IN:
PS MFLGGWCL



Hair Length: 20 cm + 13 cm
(8" + 5")
Hair Type: Natural

KEY

TEXTURE



COLOR



HEAD SIZE

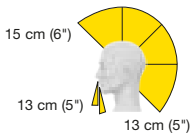




PS PREMIUM SERIES



PIERANGELO
AVAILABLE IN:
PS MFLGGWCL-BP2

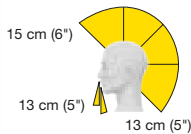


Hair Length: 15 cm + 13 cm
(6" + 5") + 13 cm (5") Beard
Hair Type: Natural

PS PREMIUM SERIES



PIERFILIPPO
AVAILABLE IN:
PS MFLGDBCL-BP1

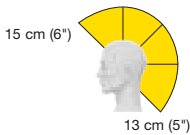


Hair Length: 15 cm + 13 cm
(6" + 5") + 13 cm (5") Beard
Hair Type: Human

PS PREMIUM SERIES



TONY
AVAILABLE IN:
PS MFLGDZCL

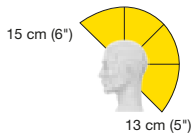


Hair Length: 15 cm + 13 cm
(6" + 5")
Hair Type: Human

PS PREMIUM SERIES



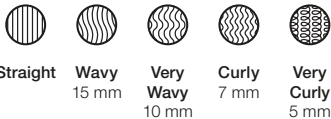
TOSHIO
AVAILABLE IN:
PS MFLGDBCL



Hair Length: 15 cm + 13 cm
(6" + 5")
Hair Type: Human

KEY

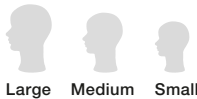
TEXTURE



COLOR



HEAD SIZE





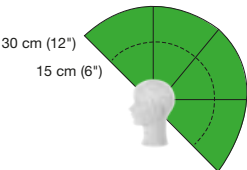
Thoughtfully designed to provide the perfect playground for practicing and perfecting an array of styling techniques.

“
These *caps* are going
to *change the game*
when it comes to
mannequin heads.

– Elizabeth Faye,
Hair Love Retreat

CS CAP SERIES

BAILEY CAP
AVAILABLE IN:
CS SC3-FMSUI3LL



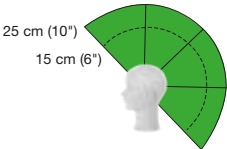
Hair Length: 30 cm + 15 m
(12" + 6")
Hair Type: Human



OS ORIGINAL SERIES

CS CAP SERIES

BRITNEY
AVAILABLE IN:
OS MMMUIMLL
CS SC2-FMMUIMLL



Hair Length: 25 cm + 15 cm
(10" + 6")
Hair Type: Human



KEY

TEXTURE

Straight

Wavy
15 mm

Very Wavy
10 mm

Curly
7 mm

Very Curly
5 mm

Coily
3 mm

COLOR

Black

Dark

Medium Dark

Medium

Medium Light

Light

Ultra Light

White

Gray

HEAD SIZE

Large

Medium

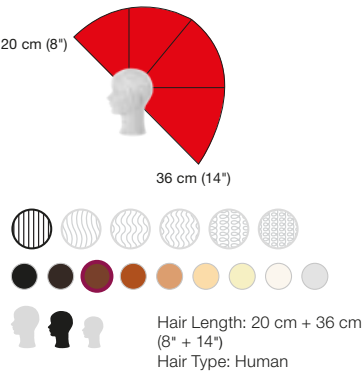
Small



os ORIGINAL SERIES



IRENE
AVAILABLE IN:
os MMMIIDML
cs SC2-FMMIIDML



cs CAP SERIES

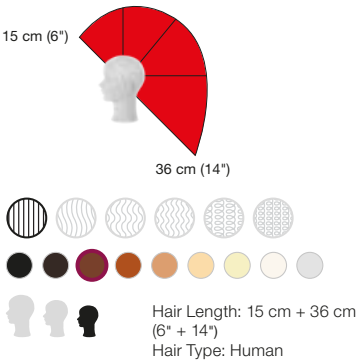


“
I always feel
that Pivot Point
mannequins do
such an *amazing*
job of articulating
the *artistry of hair*.
– Nick Stenson

– Nick Stenson

cs CAP SERIES

IVEE CAP
AVAILABLE IN:
cs SC3-FMSIIDLL



KEY

TEXTURE

Straight

Wavy
15 mm

Very Wavy
10 mm

Curly
7 mm

Very Curly
5 mm

Coily
3 mm

COLOR

Black

Dark

Medium Dark

Medium

Medium Light

Light

Ultra Light

White

Gray

HEAD SIZE

Large

Medium

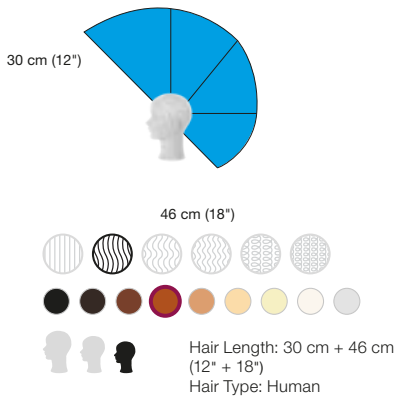
Small



os ORIGINAL SERIES



MEGAN
AVAILABLE IN:
os MMSSC2LL-20XL



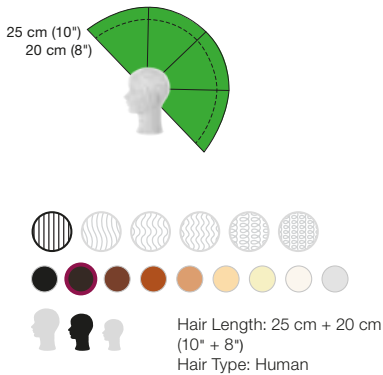
“
The *best quality hair*
on a mannequin.
Their mannequins
have *realistic*
features and the
hair is great to
practice everything.
We only use Pivot
Point mannequins.

– Morgan

os ORIGINAL SERIES



SARAH
AVAILABLE IN:
os MMMUCDML
cs SC2-FMMUCDML



cs CAP SERIES



KEY

TEXTURE



COLOR



HEAD SIZE



TEXTURE



Get ready to embrace a world of curls, from wavy to coily. Our range of curl patterns is the ultimate tool to learn, practice and build confidence working with all hair types.

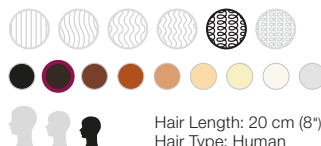
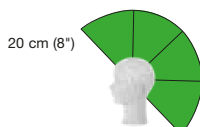
OS ORIGINAL SERIES

CS CAP SERIES

AMBER

AVAILABLE IN:

- OS MMSUIDLD-TC
- CS SC3-FMSUIDLD-TC



Hair Length: 20 cm (8")
Hair Type: Human

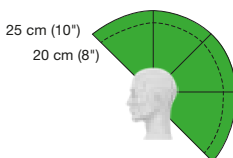


OS ORIGINAL SERIES

CAMERON

AVAILABLE IN:

- OS MPMUIDMD-3C



Hair Length: 25 cm + 20 cm
(10" + 8")
Hair Type: Human

“

I have purchased several of the Cameron mannequins. To say that he is a *perfect representation* of “our” texture is an understatement. His hair is dense, full-bodied and a dead ringer for *Afro texture* in the flesh. Other mannequin makers don’t even compare.

– Cedric Brown

KEY

TEXTURE



COLOR



HEAD SIZE

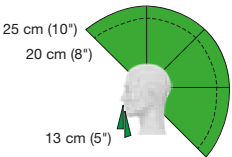




os ORIGINAL SERIES



ELIJAH
AVAILABLE IN:
os MPMUIDMD-8BR5C



Hair Length: 25 cm + 20 cm
(10" + 8") + 13 cm (5") Beard
Hair Type: Human

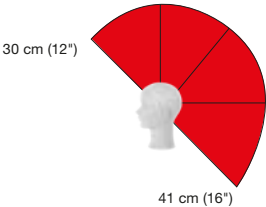
“
I am extremely impressed by Elijah and satisfied with this product and would *highly recommend* it to all barber and cosmetology schools.

– Rodrick Samuels

os ORIGINAL SERIES



JANET
AVAILABLE IN:
os MMSIIDLD-7C
cs SC3-FMSIIDLD-7C



Hair Length: 30 cm + 41 cm
(12" + 16")
Hair Type: Human

cs CAP SERIES



KEY

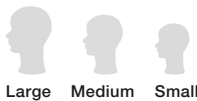
TEXTURE



COLOR



HEAD SIZE

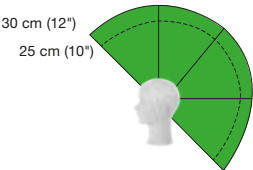




os ORIGINAL SERIES

cs CAP SERIES

MAYA
AVAILABLE IN:
os MMMUIDLD-TC
cs SC2-FMMUIDLD-TC



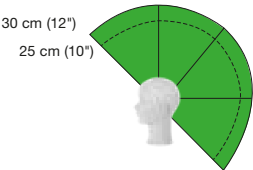
Hair Length: 30 cm + 25 cm
(12" + 10")
Hair Type: Human



os ORIGINAL SERIES

cs CAP SERIES

MULTI-TEXTURE QUAD
AVAILABLE IN:
os MMMUIDLD-TC-4P
cs SC2-FMMUIDLD-TC



Hair Length: 30 cm + 25 cm
(12" + 10")
Hair Type: Human



KEY

TEXTURE



COLOR



HEAD SIZE





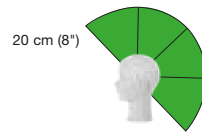
SS SLIP-ON SERIES



TIGHTLY CURLED SLIP-ON

AVAILABLE IN:

SS SB9UIDLL-TC-8



Hair Length: 20 cm (8")
Hair Type: Human

“

Every time our team has a great class or hair event, it is *with our Pivot Point gear* and support.

– Jesse Linares



CAP SERIES COMPONENTS

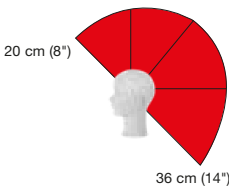


Fast-track your skill development with our Cap Series components—a hands-on opportunity to master techniques on a smaller scale before advancing to full-head applications, all while minimizing hair waste.



RECTANGLE INCREASE CAP

Medium Size
SC2-RMMIIDML

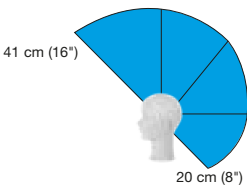


Hair Length: 20 cm + 36 cm
(8" + 14")
Hair Type: Human



RECTANGLE SOLID CAP

Medium Size
SC2-RMMSCDML

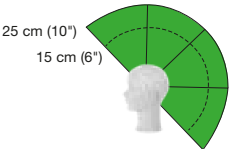


Hair Length: 41 cm + 20 cm
(16" + 8")
Hair Type: Human



SILHOUETTE UNIFORM CAP

Medium Size
SC2-LMMUIDLL-V

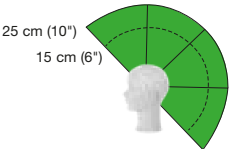


Hair Length: 25 cm + 15 cm
(10" + 6")
Hair Type: Human



SILHOUETTE UNIFORM TIGHTLY CURLED CAP

Medium Size
SC2-LMMUIDLD-TC



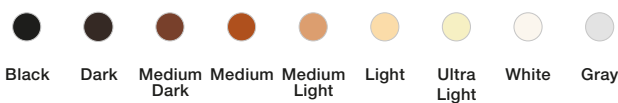
Hair Length: 25 cm + 15 cm
(10" + 6")
Hair Type: Human

KEY

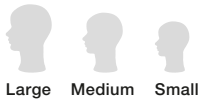
TEXTURE



COLOR



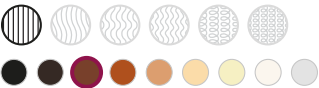
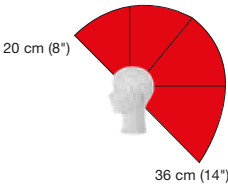
HEAD SIZE





**RECTANGLE
INCREASE CAP**

Small Size
SC3-RMSIIDLL-M

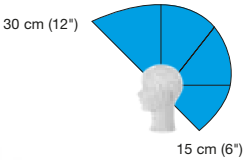


Hair Length: 20 cm + 36 cm
(8" + 14")
Hair Type: Human/Bio



**RECTANGLE
SOLID CAP**

Small Size
SC3-RMSSCDLL-M

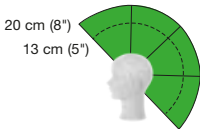


Hair Length: 30 cm + 15 cm
(12" + 6")
Hair Type: Human/Bio



**SILHOUETTE
UNIFORM CAP**

Small Size
SC3-LMSUIDLL-V



Hair Length: 20 cm + 13 cm
(8" + 5")
Hair Type: Human

KEY

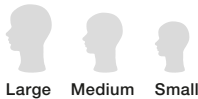
TEXTURE



COLOR



HEAD SIZE



CAP SERIES ACCESSORIES



Explore tools that elevate your experience with our Cap Series, featuring the indispensable Reusable Headform—an essential element to unlock boundless creativity and support lifelong learning.

REUSABLE HEADFORM

Medium Size – Light Tone
SC2-HMM0000L-ABS



REUSABLE HEADFORM

Medium Size – Medium Tone
SC2-HMM0000M-ABS



REUSABLE HEADFORM

Medium Size – Dark Tone
SC2-HMM0000D-ABS



REUSABLE HEADFORM

Small Size – Light Tone
SC3-HMM0000L-ABS



REUSABLE HEADFORM

Small Size – Medium Tone
SC3-HMM0000M-ABS



REUSABLE HEADFORM

Small Size – Dark Tone
SC3-HMM0000D-ABS



CAP SERIES DRYER POST

SC2-DRYERPOST



CAP SERIES LOCK POST

SC2-LOCKPOST



CAP SERIES LOCKING KEY AND LANYARD

SC2-KEY



CAP SERIES PLAIN CAP

Medium Size
SC2-CAP



*Reusable Headform is compatible with Cap Series (CS) items only.
Please confirm the head size listed under selected caps to ensure the proper headform size.*

SLIP-ON SERIES ACCESSORIES



Complete your Slip-On experience with the Universal Headform.



UNIVERSAL HEADFORM

HB90000L-PPI

Universal Headform
is compatible with
SS Slip-On Series
items only.

SWATCHES AND WEFTS

Embark on a color and extension creativity journey with our hair swatches and wefts, your go-to tools for trying color and perfecting fitting methods.

HAIR SWATCH KIT (70PC)

HS-70



HAIR MOVEMENT SWATCH KIT (7PC)

HS-8CURLY



WHITE HAIR SWATCH (12PC)

5 cm
HS-12W



LIGHT HAIR SWATCH (12PC)

5 cm
HS-12L



MEDIUM HAIR SWATCH (12PC)

5 cm
HS-12M



MEDIUM-LIGHT HAIR SWATCH (12PC)

5 cm
HS-12ML



MEDIUM-DARK HAIR SWATCH (12PC)

5 cm
HS-12MD



DARK HAIR SWATCH (12PC)

5 cm
HS-12D



DARK GRAY HAIR SWATCH (12PC)

5 cm
HS-12DG





WHITE HAIR SWATCH (50PC)

15 cm
HS-50W



LIGHT HAIR SWATCH (50PC)

15 cm
HS-50L



MEDIUM HAIR SWATCH (50PC)

15 cm
HS-50M



MEDIUM-LIGHT HAIR SWATCH (50PC)

15 cm
HS-50ML



MEDIUM-DARK HAIR SWATCH (50PC)

15 cm
HS-50MD



DARK HAIR SWATCH (50PC)

15 cm
HS-50D



DARK GRAY HAIR SWATCH (50PC)

15 cm
HS-50DG



ALICIA SEWN SHORT HAIR WEFT

20x40 cm
HW-ZZ2040



ALICIA SEWN LONG HAIR WEFT

50x50 cm
HW-ZZ5050



SEWN LONG DARK HAIR WEFT

50x30 cm
HW-CD5030



SOPHIA WHITE GOAT HAIR WEFT

30x50 cm
HW-GW3050



ANNA WEFT

50x50 cm
HW-DZ5050-79



HOLDERS & TRIPODS



Meet your mannequins' best friends—our tripods and holders, the ultimate companions designed to ensure your journey is as seamless as it is creative.

EXTENSION HOLDER

163W



METAL ADJUSTABLE HOLDER

165N



PLASTIC SWIVEL HOLDER

093N



UNIVERSAL TRIPOD

UNIVERSAL-SWVL



TITAN TRIPOD

TITAN-SWVL



DESIGNER TRIPOD

DESIGNER-TRI



CARE & MAINTENANCE



Nurturing your educational hair products isn't just about extending their lifespan: it's about supercharging learning. With proper care, you can ensure that each learning and practice session yields maximum, vibrant results that inspire and elevate skills.

**SCAN OR CLICK
TO LEARN MORE**



HOW TO ORDER

U.S.

Website: www.pivot-point.com/shop
Phone: 847-866-0500
Email: info@pivot-point.com

United Kingdom & Ireland

Website: www.pivotpoint.co.uk/shop/
Phone: 01604 879666
Email: info@pivotpoint.co.uk

Europe, Asia, Middle East

Phone: +31 6 14251574
Email: jlaan@pivot-point.com

Mexico, Central & South America

Phone: +1 847-866-0500
Email: mgoldman@pivot-point.com

Other Countries

**Click to Explore Our Global
Distributor Network**

Not all mannequins are sold in every country.

Items available in Cap Series (CS) are sold as hair caps only; Reusable Headform sold separately.

Items available in Slip-On Series (SS) are sold as masks only; Universal Headform sold separately.

RETURN POLICY



PIVOT POINT